

Boughton and Dunkirk Neighbourhood Plan

Background document **BD8** - Conservation Areas Assessments Introduction.

There are three Conservation Areas in Boughton Parish, and these were the subject of Conservation Area Character Appraisals, carried out by Swale Borough Council in 2015.

Conservation Areas were first introduced in the Civic Amenities Act of 1967. A Conservation Area is defined as “an area of special architectural or historic interest, the character or appearance of which it is desirable to preserve or enhance” (s.69(1) (a) of the Planning (Listed Buildings and Conservation Areas) Act 1990). It is the responsibility of individual local planning authorities to designate and review Conservation Areas using local criteria to determine and assess their special qualities and local distinctiveness.

The purpose of the three Conservation Area Character Appraisals was:

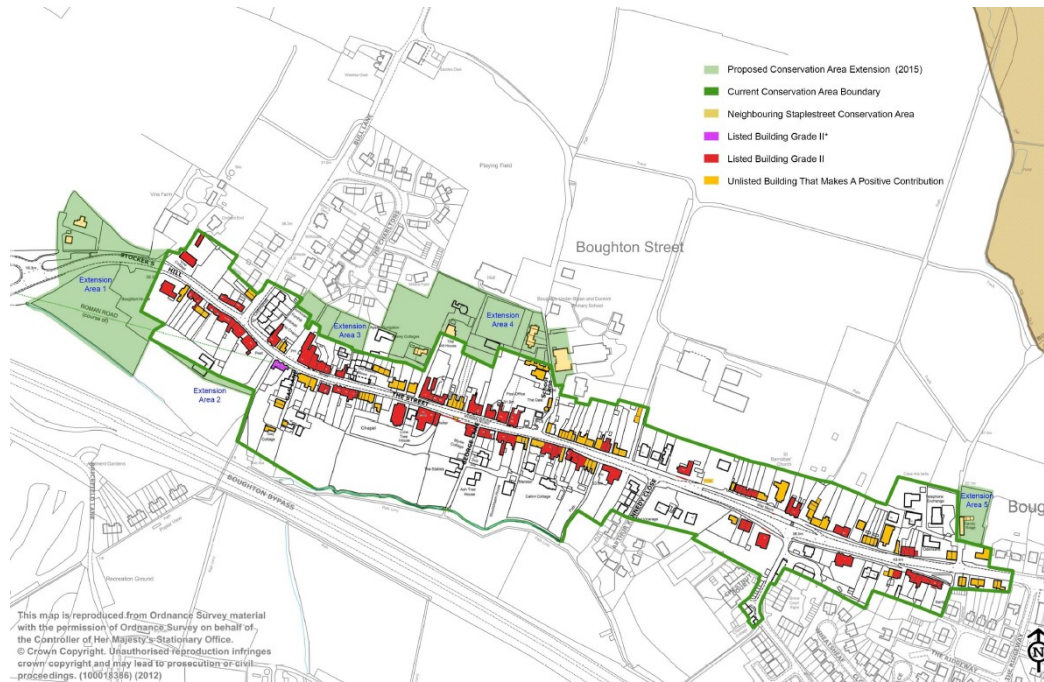
- To identify the significance of the heritage asset – i.e. the value of the asset to this and future generations because of its heritage interest – which may be archaeological, architectural, artistic or historic interest.
- To increase public awareness and involvement in preservation and enhancement of the area.
- To provide a framework for planning decisions, to guide positive change and regeneration.
- To review the Conservation Area boundary in accordance with Section 69(2) of the Planning (Listed Buildings and Conservation Areas) Act 1990.
- To highlight particular issues and features which detract from the character or appearance of the Conservation Area which offer potential for enhancement or improvement through positive management.

The appraisals recommended changes to the boundaries of the Conservation Areas, and these were subsequently adopted by the Borough Council in 2017, although the final documents were not officially adopted until June 2019.

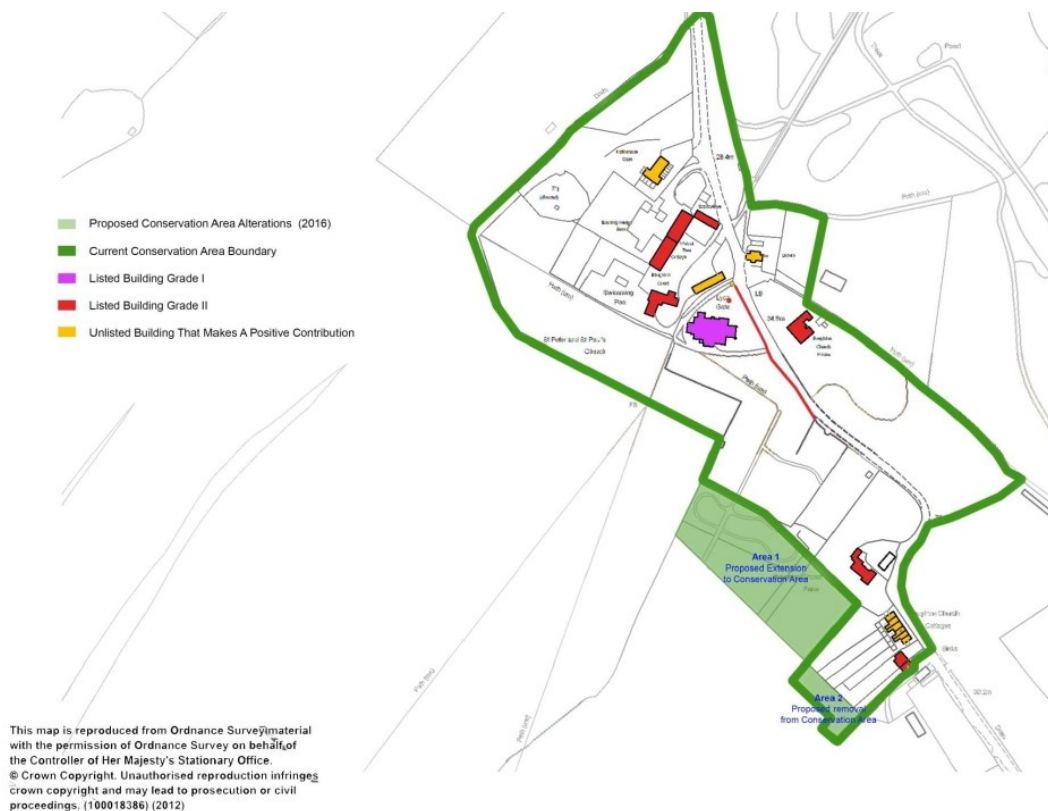
The final areas are shown on the maps below.

Boughton and Dunkirk Neighbourhood Plan

Boughton Village Conservation Areas.



Boughton Street Conservation Area(s).



Boughton and Dunkirk Neighbourhood Plan

Boughton Church Conservation Areas(s).

