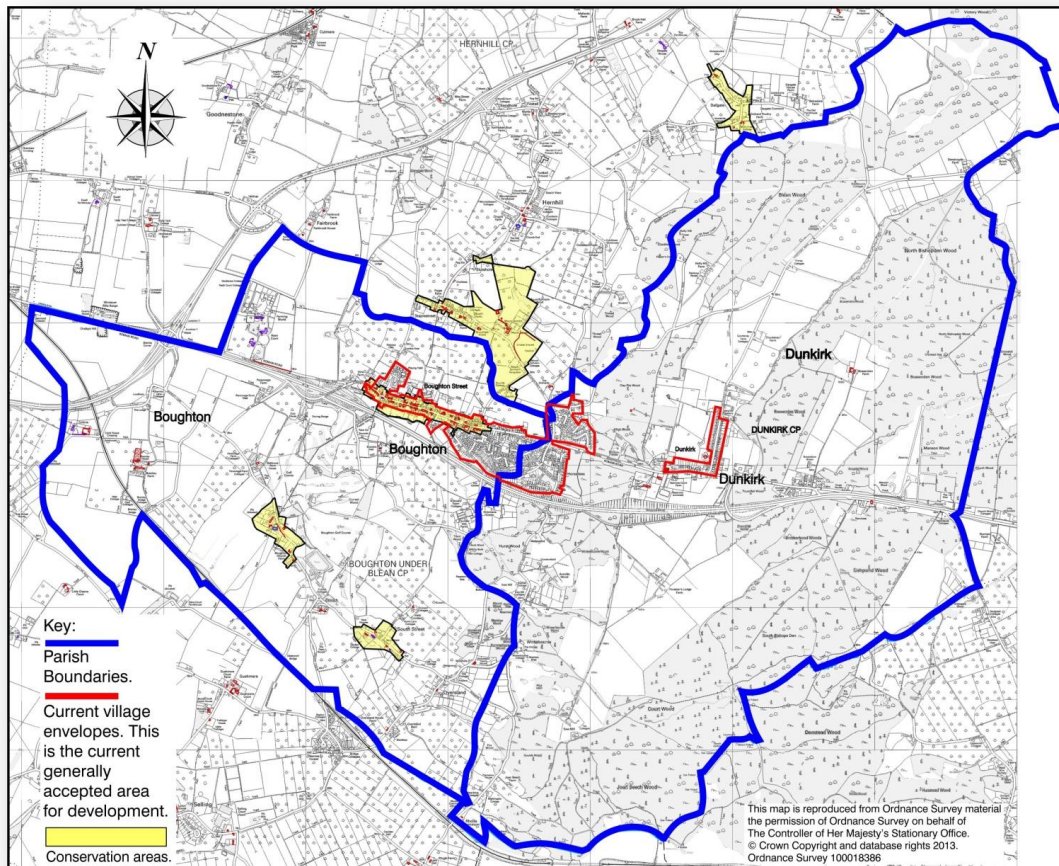


Boughton & Dunkirk Neighbourhood Plan

YOUR COMMUNITY – YOUR FUTURE



Since April 2012, local communities have been able to produce Neighbourhood Plans for their area. These Plans enable parishes to take the lead in producing part of the statutory development plan, putting in place planning policies for future development and growth which includes the use and development of land and associated social, economic and environmental issues. Crucially, they reflect the needs of the local community and must be used by the local authority to determine future planning applications in the area designated in the plan.

We are preparing a Neighbourhood Plan for Boughton and Dunkirk, and we need YOU to say what's important to you.

This questionnaire covers a range of issues, and there is an opportunity for you to add more if you think we've missed something. There will be further consultation and chances for you to comment on the draft plan along the way. Once the Plan has been finalised, it will be subjected to external inspection. Then there will be a Referendum with a 'YES/NO' vote for all residents of Boughton and Dunkirk to agree the Plan.

Every household in Boughton and Dunkirk will receive a questionnaire. A reply-paid envelope is enclosed for your completed form. Completed forms can also be returned to:

V. Howlands Farm Shop, Maytree Nursery, Woods Garage, The Post Office and The Village Store.

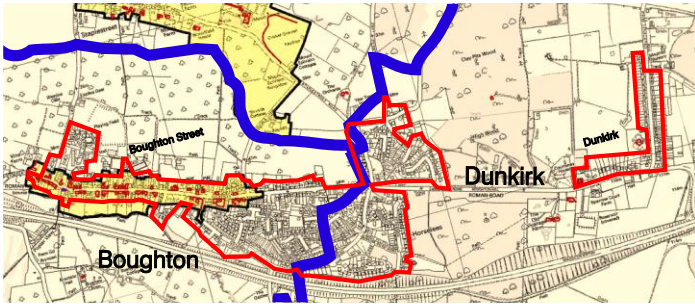
Closing date for return of this questionnaire is 7th June 2014

Or you can complete online at www.boughtonanddunkirkneighbourhoodplan.org.uk

There is a free draw with prizes for the first 3 entries drawn after the closing date. 1). £30 voucher towards a meal at the Queens Head. 2). £20 Voucher - plants at Maytree Nursery. 3). £ Meal for 2 at The Red Lion

Visit our website to find out more about the Neighbourhood Plan www.boughtonanddunkirkneighbourhoodplan.org.uk

Q1 This question is about potential **residential** development and where you feel it should or should not occur. **Please tick all that apply:**



The map shows the area with the village envelopes (in red). These are the generally accepted areas for development. Outside the envelopes developments are possible but only in exceptional circumstances.

YES	NO	NOT SURE
-----	----	----------

Should the village envelopes be enlarged?			
Should there be development on brownfield (previously developed) sites?			
Should there be development in the countryside?			

Would you like to see a bias towards any of the following:

Converted farm and other buildings			
Bringing old redundant buildings back into use			
Garden development			
Demolition and re-building of new homes			
New build homes			

Are there any other comments or suggestions that you would like to make about possible **residential** developments and where they should or should not occur

Q2 Are there sites which, in your opinion, could be considered for inclusion in our development plan?
Are there areas where you feel there should not be any development?

Please indicate, with as much detail as possible

Residential	
Commercial	
Community Use	
Green Space	
Areas that should NOT be developed	
Areas you feel COULD be developed	

Are there any other comments or suggestions that you would like to make about all possible developments and where they should or should not occur

Q3 If there is support for residential development what type and level of housing would you wish to see? Please tick all that apply.

	Already Too many	About right	Need a few more	Need a lot more
Flats				
Retirement housing / apartments				
Bungalows				
Terraced houses				
Semi-detached houses				
Detached houses				
Gypsy pitches ** See Q4				

Are there any other comments or suggestions that you would like to make about the type of developments

Q4 Do you think that our neighbourhood plan should have a separate section for Gypsy and traveller policies, in the same way as Swale, or should all issues be dealt with under normal planning constraints?

Yes, there should be a separate policy.	
No, they should be part of the normal planning process.	

Are there any other comments or suggestions that you would like to make.

Q5 What type of housing would you like to see?

	YES	NO	NOT SURE
Rented (Private or Housing Association)			
Social Housing			
Low cost / affordable starter homes			
Private owner occupier homes			

Are there any other comments or suggestions that you would like to make about possible housing developments and where they should or should not occur?

Q6 Building design and construction - what are the important factors?

Please indicate all of the design criteria you would like to see included.

	YES	NO	NOT SURE
All new builds should exceed the minimum standards for energy use			
All areas for gardens/paths/parking to be porous to allow drainage			
Internal design should make the most effective use of interior space			
Developments should provide a mixture of sizes and accommodation			

Are there any other comments or suggestions that you would like to make?

Q7 To maintain the vibrancy of the community and provide local opportunities for employment, what area of business development do you consider appropriate for the villages?

Please indicate all of those you would like to see included.

	YES	NO	NOT SURE
Make sites available for manufacturing			
Make sites available for office based business			
Use converted houses for business			
Use agricultural buildings for other businesses			
Make more use of existing business parks			
Extend existing business parks			
Create new business areas			
Move businesses out of the parishes			

Please add any further comments here

Q8 Are there sufficient health facilities in the villages?

YES

NO

NOT SURE

If you answered 'no', what other facilities would you like to see & would you use them?

	Never	Rarely	Sometimes	Often
Dentist				
Physio / chiropractor				
Chiropodist				

Alternative therapies				
Other - please make your comments below				

Which other facilities do you think might be made available?

Q9 Which of the following would you wish to see, as an improvement of village facilities, and please tick the ones you are likely to use, indicating frequency. Please tick all that apply.

Would like to see	Never	Rarely	Sometimes	Often
-------------------	-------	--------	-----------	-------

Sports/gym facility (all ages). Specify below					
Education/learning centre (adult)					
Nursery/pre-school playgroups					
After school club for older (secondary) pupils					
Youth clubs					
More adult daytime activity groups					

What other facilities would you like to see:

Q10 What improvements could be introduced to amenities such as open spaces, leisure sites, walking and cycling routes to promote healthy living, and what facilities for informal recreation that would enhance the quality of life for local people.

Site address / area	What improvement would you like to see?

Q11 Looking at the quality of the surrounding countryside, what areas have special natural or visual significance and need protection.

Site address / area	What protection should there be

Q12 Are there areas affected by issues such as pollution, noise and flooding. Where are they and what could, or should, be done to mitigate this?
Please add any other issues you feel apply.

Area	Issue

Q13 Which features, in both parishes, need protection and which features need improvement?

Please use these boxes for your answers	
Boughton	
Dunkirk	

Q14 Please rate the following statements from 1(Not important) to 5 (Very important)

1	2	3	4	5
----------	----------	----------	----------	----------

Better signage of paths and bridleways					
Dedicated fitness trails					
Dedicated off road cycle trails					
More map boards showing footpath routes					
Continue improving stiles/gates for access					

What other facilities would you like to see:

Q15 Do you want the Plan to consider the potential benefits of additional tourism to our communities?

YES
NO
NOT SURE

Please add your comments (OK if more parking etc..)

Q16 What are your feelings about safety, crime and policing?

YES	NO	DON'T KNOW
------------	-----------	-------------------

Do you generally feel safe			
Would like to see more police patrols			
Would like to see more lights in the villages			
Do you feel that levels of crime are decreasing			
Would you feel safer with, and join, a Neighbourhood Watch			

Please add any further comments here

Q17 Please rate the following statements from 1(Not important) to 5 (Very important)

	1	2	3	4	5
Better integration of bus/train timetables					
Provision of a rural bus route around the community					
A shuttle bus to serve the school					
Encourage car sharing schemes					
More bus shelters					

Q18 Please rate the following statements from 1(Not important) to 5 (Very important)

	1	2	3	4	5
Enforcing parking rules where there are yellow lines					
Increased parking regulations to improve traffic flow					
Providing (extra) off street parking where possible					
Prompt filling of potholes and other road defects					
Enforcement of dog fouling laws on footways					
Provide extra litter bins and better collection/emptying					

Thank you for completing the main questionnaire. Please use this space to tell us what you think we have missed or what you consider of great importance to our villages.

If we needed to concentrate on only one or two issues what would they be?

PLEASE RETURN THIS FORM IN THE FREEPOST ENVELOPE PROVIDED by 7th JUNE 2014

✂..... Cut here..... INFORMATION FOR DRAW ONLY. Cut here..... ✂

There is a free draw with prizes for the first 3 entries drawn after the closing date. 1). £30 voucher towards a meal at the Queens Head. 2). £20 Voucher - plants at Maytree Nursery. 3). Meal for 2 at The Red Lion.

Please complete your contact details below:

Name:

Email: Telephone: